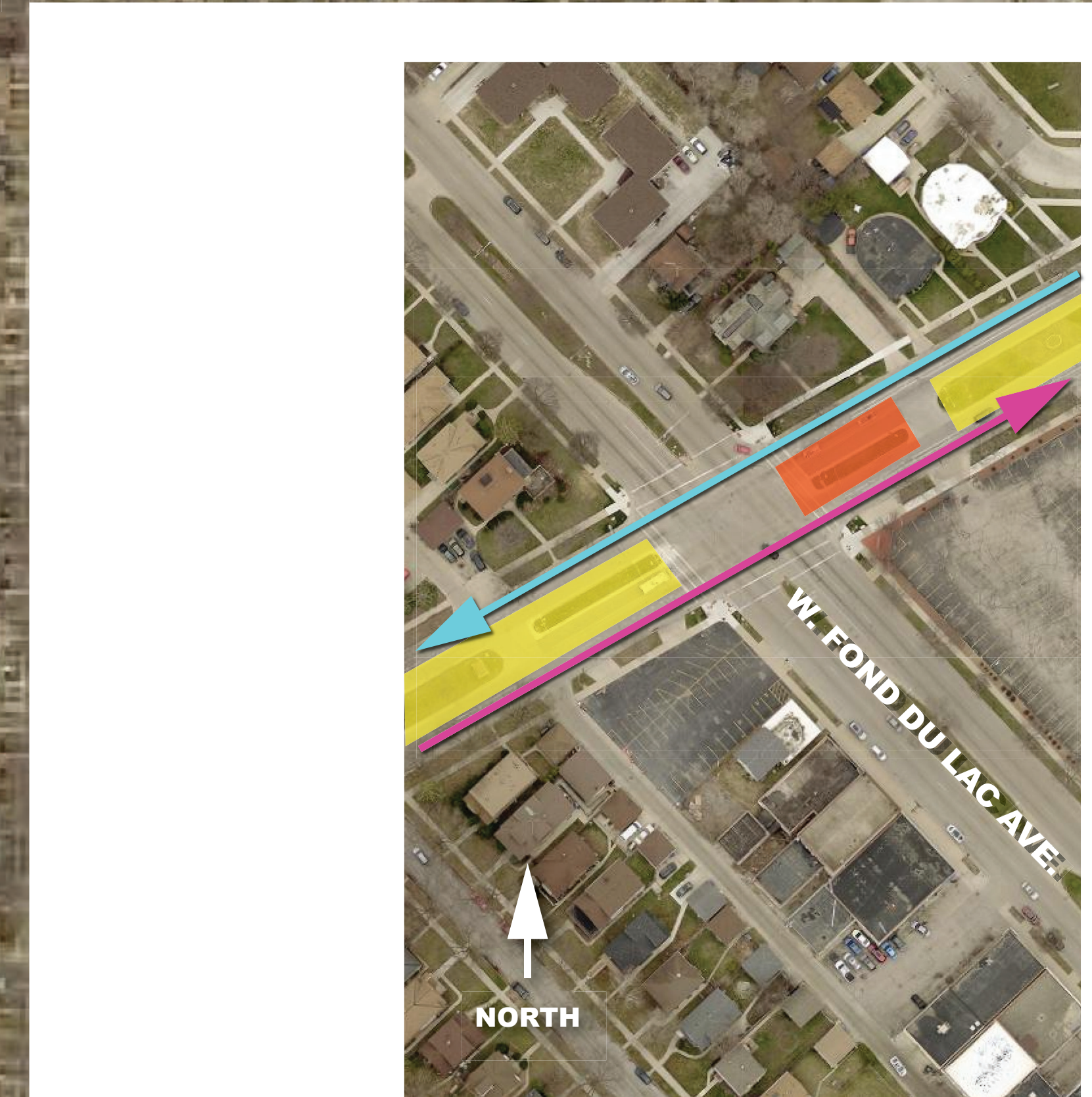
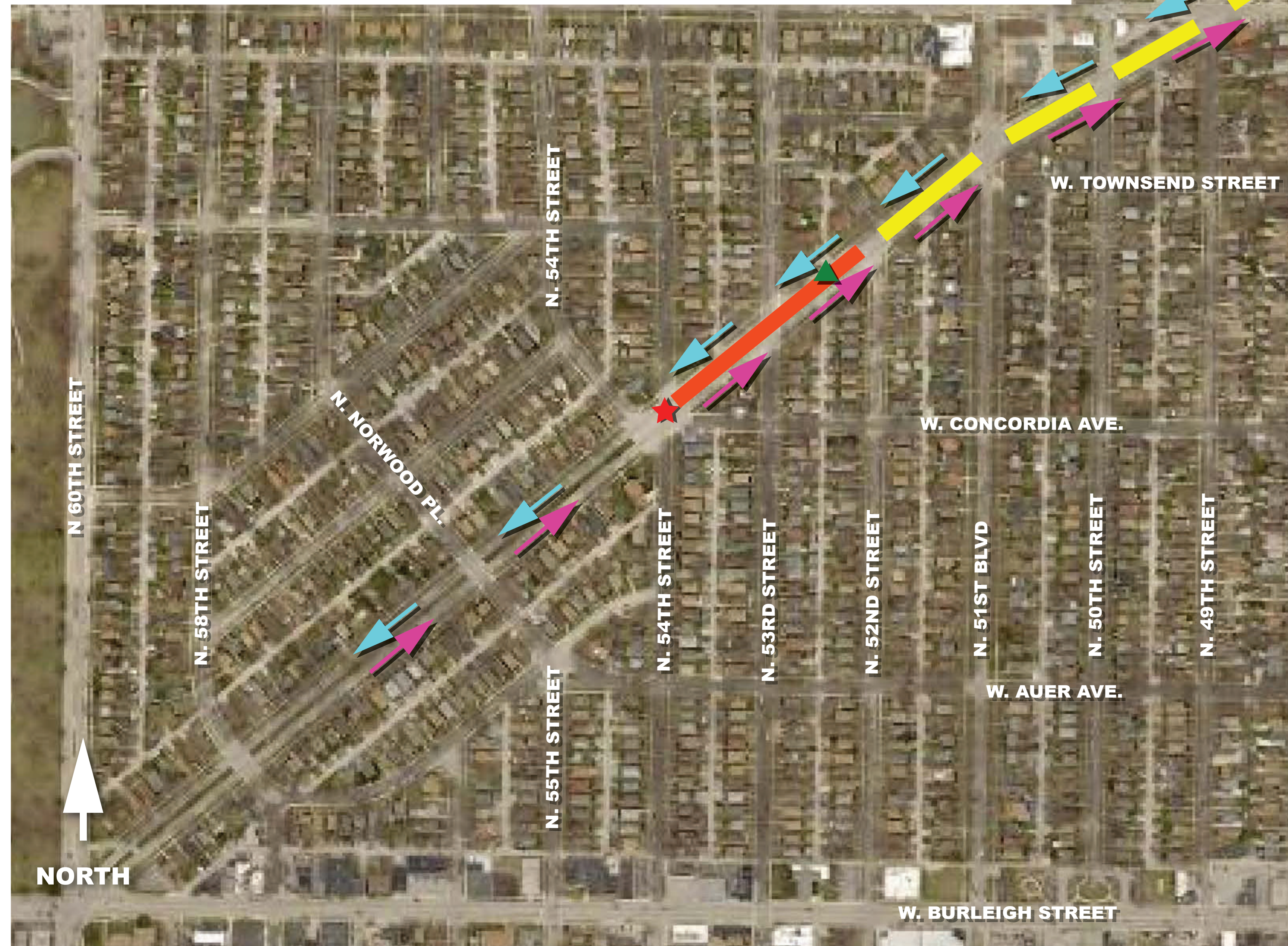


TRAFFIC ROUTING MAP W. ROOSEVELT DR. IMPROVEMENTS STAGE 2

NOTES:

1. CONSTRUCTION WILL TAKE PLACE IN THE DRIVING LANES ON EACH SIDE.
2. WESTBOUND TRAFFIC WILL BE IN CURB LANE.
3. EASTBOUND TRAFFIC WILL BE IN CURB LANE.
4. CROSS TRAFFIC WILL BE MAINTAINED AT MOST INTERSECTIONS.
5. SOME TURNS WILL BE RESTRICTED AT TIMES.
6. DRIVEWAY AND ALLEY ACCESS WILL BE MAINTAINED.



ENHANCED VIEW

- LEGEND**
- ★ BEGIN/END TRAFFIC CLOSURE
 - WORK ZONE
 - WESTBOUND TRAFFIC
 - EASTBOUND TRAFFIC
 - ▲ TREE REMOVAL
 - CONSTRUCTION ZONE

