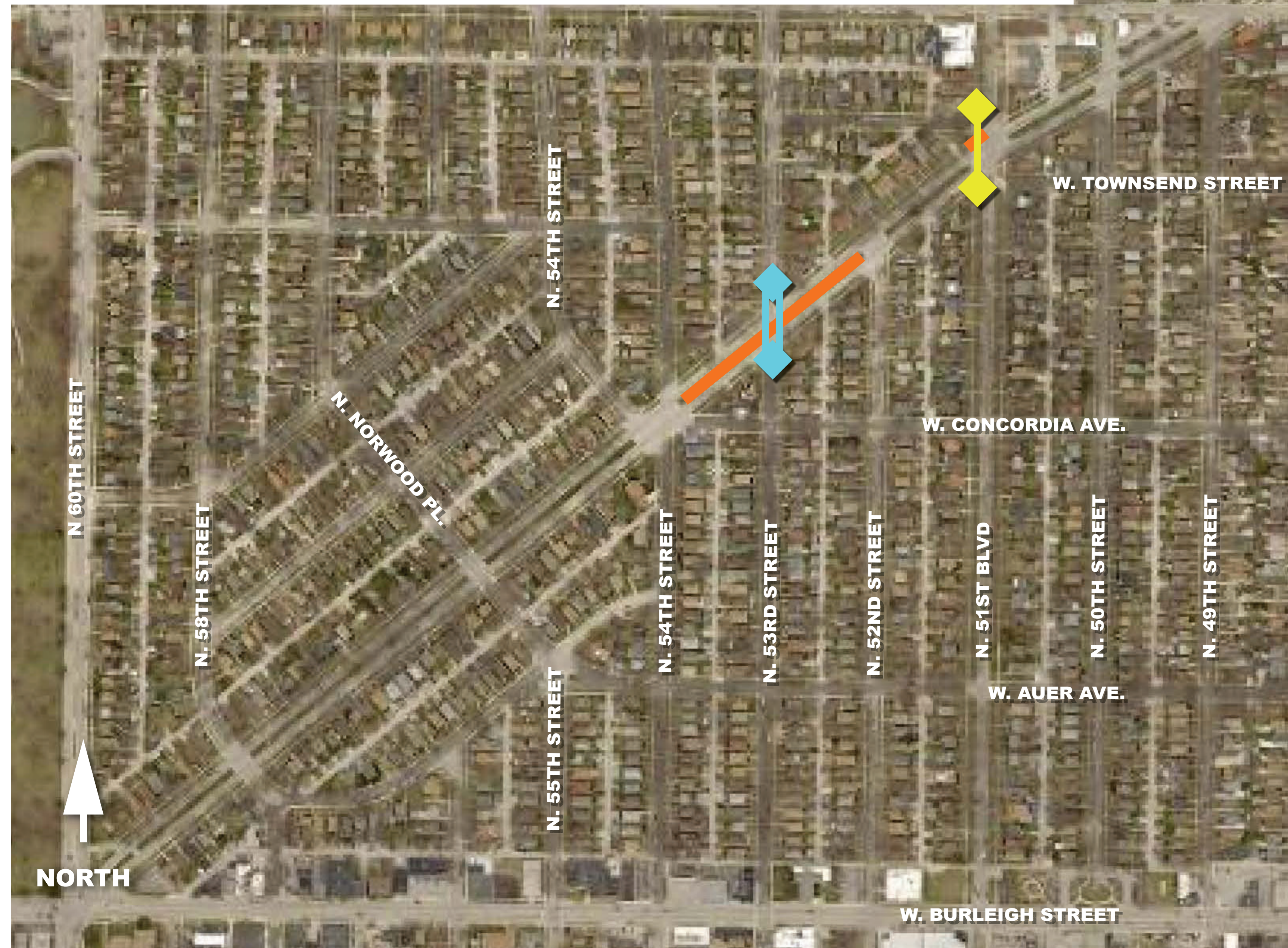






CROSSWALK CLOSURE MAP W. ROOSEVELT DR. IMPROVEMENTS

NOTES:

1. SIDEWALKS WILL BE UNAFFECTED FOR THE MAJORITY OF THE PROJECT.
2. ONLY CROSSINGS OF W. ROOSEVELT DRIVE WILL BE AFFECTED.
3. PEDESTRIANS CAN/MAY CROSS AT N. 54TH STREET OR N. 52ND STREET WHEN CROSSWALK AT N. 53RD STREET IS CLOSED.



LEGEND

-  CROSSWALK CLOSURE STAGES 1 & 2
-  CROSSWALK CLOSURE STAGE 1 ONLY.
-  CROSSWALK CLOSURE STAGE 2 ONLY.
-  CONSTRUCTION ZONE

For more information about the project and to sign-up for project updates, visit the project webpage at:

[MMSD.com/WEST-ROOSEVELT-SEWER](https://www.mmsd.com/WEST-ROOSEVELT-SEWER)

or at the QR code:

